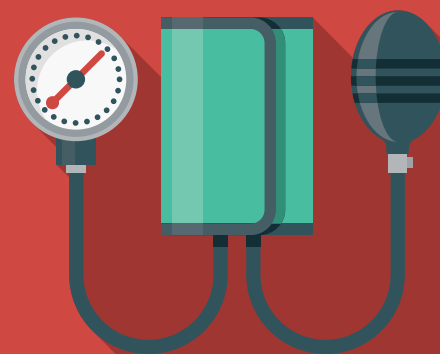


Management of Hypertension in Primary Care



www.scahec.net/learn/HTN

Hypertension is a long-recognized health burden in the US, and particularly the southeastern region of the US. Recent treatment guidelines have been developed to categorize blood pressure levels and treatment. This program addresses the implementation of the guidelines in primary care settings with a special focus for clinics serving underserved patient populations.

Learn more about hypertension management in primary care from leading experts across North America through four free online modules:

Overview Module

Maximum of 3.75 *AMA PRA Category 1 Credit(s)*TM

Considerations Module

Maximum of 1.5 *AMA PRA Category 1 Credit(s)*TM

Implementation Module

Maximum of 4.50 *AMA PRA Category 1 Credit(s)*TM

Assessment Module

Maximum of 2.75 *AMA PRA Category 1 Credit(s)*TM

Credits

Physicians: The Medical University of South Carolina has approved this enduring material for *AMA PRA Category 1 Credit(s)*TM. Physicians should only claim the credit commensurate with the extent of their participation in the activity.

Other Providers (PA, NP, Pharmacists, Nurses): The Medical University of South Carolina has approved this enduring activity for *AMA PRA Category 1 Credit(s)*TM. 1 contact hour equals 0.1 CEU).

All Other Professionals: This enduring activity provides South Carolina Area Health Education Consortium credit.

This activity has been planned and implemented in accordance with the accreditation requirements and policies of the Accreditation Council for Continuing Medical Education (ACCME) through the joint providership of the Medical University of South Carolina and SC AHEC. The Medical University of South Carolina is accredited by the ACCME to provide continuing medical education for physicians.

In accordance with the ACCME Essentials and Standards, anyone involved in planning or presenting this educational activity will be required to disclose any financial relationships with any ineligible companies. This information will be made available to participants at the beginning of the activity. Speakers who incorporate information about off label or investigational use of drugs or devices will be asked to disclose that information at the beginning of their presentation. Any financial relationships with these ineligible companies have been mitigated by MUSC Office of CME. The Activity Director, planners and presenters of this enduring activity have no relevant financial relationships with commercial interests.

Register at
www.scahec.net/learn/HTN



College of Medicine

