

AWHONN: Intermediate Fetal Monitoring



CHOOSE A DATE

- ~~Tuesday, January 7, 2025~~
- ~~Thursday, January 23, 2025~~
- Tuesday, March 18, 2025
- Monday, April 14, 2025
- Wednesday, May 14, 2025
- Friday, August 13, 2025
- Wednesday, September 17, 2025
- Monday, October 13, 2025
- Wednesday, November 12, 2025
- Wednesday, December 10, 2025

TIME

Sign-in 8:15am

Program 8:30am - 5:00pm

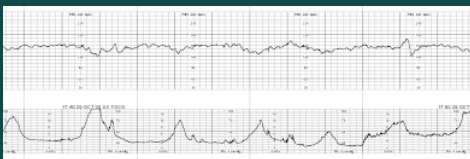
LOCATION

McLeod Medical Park West
AHEC Conference Room, Suite 350
101 S. Ravenel Street
Florence, SC 29506

FEES

AHEC Registration Fee: \$10
Course Materials & Modules: \$145
(8th edition) for AWHONN
members & non-members
<https://awhonn.kendallhunt.com/>

Course materials/module fees are
paid online directly to AWHONN.
(Price subject to change based on
AWHONN.)



DESCRIPTION

The updated AWHONN Intermediate Fetal Monitoring Course 7th Edition is a one day instructor led course with online prerequisite education. This course addresses principles of fetal monitoring and may be used as a knowledge assessment to validate proficiencies of experienced perinatal clinicians. This course includes lecture, hands-on skill station exercises about fetal heart rate auscultation, performing Leopold's Maneuvers, placement of an intrauterine pressure catheter and fetal spiral electrode, interpretation of tracings, identification of physiologically based clinical interventions, communication and documentation. This course may be used to support preparation for certification examinations.

Student Requirements:

Each student must complete the prerequisites prior to attending the in-person session with your instructor. To access the Online Portion of the Intermediate Fetal Monitoring Course you will need the Course ID and Student Materials ID. The Course ID is specific to each course and can be found in the description listed for each individual course. The Student Materials ID can be found inside the front cover of the Student Materials Book. It is recommended that you use Chrome or Firefox to access the online course. Each participant must have a new, unused course packet.

The online course will open 30 days prior to the in-person course and will close at midnight 2 days prior to the in-person course. If you have not completed the online portion, you will not be able to attend the in-person course. The online portion consists of modules and will take approximately 3-4 hours. Modules do not have to be completed in one sitting.

After completing the online modules, the participant will have 2 attempts to pass the prerequisite post-test with a score of 80% or higher to proceed. If participants do not successfully complete the online prerequisite, they will not be allowed to attend the in-person course.

OBJECTIVES

Upon completion of this program, the participant should be able to:

1. Review maternal and fetal physiology.
2. Interpret fetal and uterine monitor tracings.
3. Evaluate auscultated fetal heart sounds.
4. Perform Leopold's Maneuvers.
5. Demonstrate placement of fetal spiral electrodes and intrauterine pressure catheters.
6. Evaluate strategies to enhance communication.

TARGET AUDIENCE

Nurses and providers who have previously completed a Basic FHM course and who use fetal heart assessment and monitoring technology in an antepartum or intrapartum setting

INSTRUCTOR

Jennifer Desai, RNC-OB, C-EFM, MSN
OB Outreach Educator - Pee Dee Region
McLeod Regional Medical Center

CREDIT

AHEC: This program is approved for 1.125 CEU's (11.25 clock hours) by Pee Dee AHEC and meets SC AHEC Best Practice standards. Participants must attend 90% of the program and complete an evaluation in order to receive a certificate of attendance. No partial credit will be given.

Nursing: CNE will be awarded by AWHONN.

11.25/11.25 CNE/CME contact hours will be provided for completion of the course in its entirety.

For more information or to register visit www.scahec.net/learn/programs?series=29 or scan the QR Code. For questions, contact Beejay Parnell at 843-777-5347 or email at beejay.parnell@mcleodhealth.org.

