

An Evidence-Based Approach to Treating Type 2 Diabetes in Adults



Co-Provided by:
**Pee Dee Area Health Education Center
& Southeastern CME Consultants, LLC**



Presented by:

C. Wayne Weart, Pharm.D., FAPhA, FASHP
Professor Emeritus

Medical University of SC, Departments of Family Medicine & Clinical Pharmacy and Outcomes Sciences

Educational Objectives

Upon completion of this program, participants should be able to:

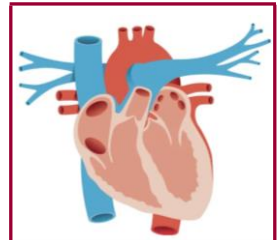
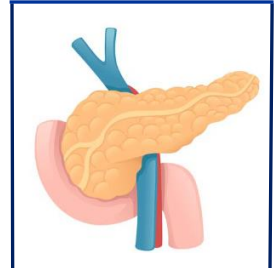
- 1) Review the 2025 American Diabetes Association (ADA) Standards of Care for Patients with Diabetes and the evidence on which they are based.
- 2) Discuss the results of landmark diabetes clinical trials that established improved patient outcomes with evidence-based pharmacotherapy.
- 3) Describe the evolving paradigm by which the historical treatment of T2DM (i.e. glycemic management) has shifted to an outcomes-based approach focused on risk reduction, particularly in older patients with established CV disease, obesity, chronic kidney disease, heart failure, metabolic-dysfunction associated steatotic liver disease (MASLD), obstructive sleep apnea, and peripheral vascular disease.

Educational Methods: Lecture presentation with time to answer self-assessment questions and discuss clinical scenarios to include audience participation.

Program participants must complete an online activity evaluation within 2 weeks following the program date to receive continuing education credit.

Target Audience: Primary Care Physicians, Physician Assistants, Nurse Practitioners, Registered Nurses, and Pharmacists.

Faculty & Program Planning Committee Disclosures: Dr. Howell, Dr. Morris, Dr. Weart, Ms. Parnell, and Ms. Morris declare no conflicts of interest or financial interests in any product or service mentioned in this program, including employment, gifts, stock holdings and/or honoraria.



DATE: TUESDAY, September 16, 2025

TIME: Sign In & BBQ Dinner: 6:00 - 7:00 P.M.

CE Presentation: 7:00 - 9:00 P.M.

LOCATION: McLeod Health Pavilion 1st Floor Conference Center 801 East Cheves Street, Florence, SC 29506

* Attend virtually via WebEx – The meeting link can be found in your MY REGISTRATIONS at: <https://www.scahec.net/learn/login>.

PRE-REGISTRATION INFORMATION:

Pre-registration is required through Pee Dee AHEC

Pre-register for this CE program at the following link:

<https://www.scahec.net/learn/programs/4383>

TUITION: \$ 40.⁰⁰ for all Participants

Payment is required at time of registration.

Types of CE credit offered with this activity: AMA, AAPA, ACPE, and ANCC continuing education credits



JOINTLY ACCREDITED PROVIDER™
INTERPROFESSIONAL CONTINUING EDUCATION

In support of improving patient care, this activity has been planned and implemented by Pee Dee Area Health Education Center and Southeastern Continuing Medical Education Consultants, LLC. *Southeastern Continuing Medical Education Consultants, LLC*, is jointly accredited by the Accreditation Council for Continuing Medical Education (ACCME), the Accreditation Council for Pharmacy Education (ACPE), and the American Nurses Credentialing Center (ANCC), to provide continuing education for the healthcare team.

Physicians

Southeastern Continuing Medical Education Consultants, LLC designates this live activity for a maximum of **2.0 AMA PRA Category 1 Credit(s)™**.

Physician Assistants

Southeastern Continuing Medical Education Consultants, LLC designates this live activity for a maximum **2.0 AAPA Category 1 Credit(s)™**.

Pharmacists

This activity will provide **2.0** live contact hours of continuing pharmacy education credit. Activity type: *Knowledge*

Nursing Accreditation Statement: Pee Dee Area Health Education Center is approved as a provider of nursing continuing professional development by the South Carolina Nurses Association, an accredited approver by the American Nurses Credentialing Center's Commission on Accreditation. This nursing CE activity awards **2.0** contact hours for RNs and **1.5** PH (pharmacology hours) and **0.5** CH (contact hours) for APRNs.