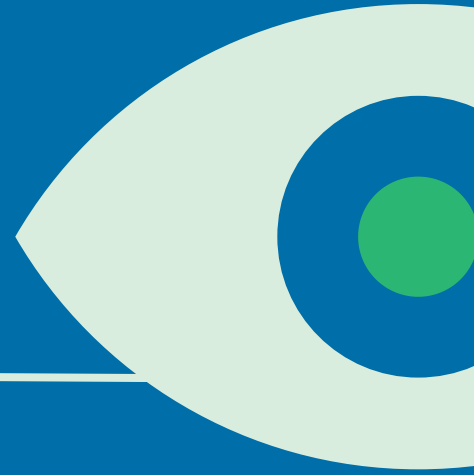




TRAUMA THERAPY

Evidence-Based Best Practices for Practitioners



Webinar via Webex

Wednesday, August 12, 2026

9:00am-12:00pm

Description

This webinar provides healthcare professionals with a comprehensive overview of trauma therapy, including its core principles, evidence-based approaches, and common misconceptions. Trauma therapy encompasses a range of clinical interventions designed to address the psychological, emotional, and physiological effects of trauma, including modalities such as Trauma-Focused Cognitive Behavioral Therapy, Eye Movement Desensitization and Reprocessing, and other trauma-informed practices.

Participants will examine what trauma therapy is—and what it is not—by distinguishing between appropriate, evidence-based interventions and practices that may be ineffective, contraindicated, or potentially harmful. Special emphasis will be placed on recognizing the risks of re-traumatization, overexposure, scope-of-practice violations, and misapplication of therapeutic techniques in non-behavioral health settings.

The session will also explore how trauma-informed care principles can be safely integrated into a collaborative, multidisciplinary healthcare model. Participants will learn strategies for effective communication, appropriate referral, and role clarity among medical providers, behavioral health clinicians, social workers, and allied professionals across the Pee Dee region. Real-world scenarios will illustrate how coordinated care can improve patient outcomes while minimizing harm. By the end of the session, participants will have a clearer understanding of their role in supporting trauma-affected patients, how to engage in safe and ethical collaboration, and how to ensure that well-intentioned interventions do not inadvertently cause harm.

Fee

Consortium Member: \$20

Non-Consortium Member: \$40

Instructor

Allsion Miller MA-CMHC, LPC, NCC

[Register Here](#) or Scan
the QR code



Credit

Counselor/Therapist: This program is approved for 3.0 hours of continuing education by Pee Dee AHEC, a division of SC AHEC, under its accreditation by the South Carolina Board of Examiners for Licensed Professional Counselors, Marriage and Family Therapists, and Psycho-Educational Specialists.

Social Worker: This program is approved for 3.0 non-social work hours of continuing education by Pee Dee AHEC, a part of the South Carolina AHEC system, as defined by the South Carolina Board of Social Work Examiners.

AHEC: This program provides 0.3 CEUs by Pee Dee AHEC and meets South Carolina AHEC Best Practice Standards.

